

THE ROBOTICS MAGNET ACADEMY

Redland Middle School's Robotics Magnet Academy incorporates knowledge and skills from the fields of science, math, and technology while offering students opportunities to:

Design • Develop • Evaluate

Creative and innovative open-ended solutions to everyday challenges.

The Robotics Academy students may enroll in advanced courses in all core classes, and may earn as many as four high school credits in courses including Algebra I, Geometry, Physical Science, and Biology.

ROBOTIC LAB

The Robotics lab provides students with the opportunity to practice and participate in various innovative robotics challenges to include VEX IQ and EDR competitions, events, and tournaments.

The lab houses VEX IQ and VEX fields that will allow students who participate to gain life skills including teamwork, project management, persistence, communication, collaboration, and critical thinking.

ELIGIBILITY:

- Minimum of 2.0 Grade Point Average in core academic subject areas (e.g. Language Arts, Mathematics, Science, Social Studies) and Conduct
- All effort grades in core academic classes must be a "2" or higher
- No more than 10 unexcused absences for previous year

HOW TO APPLY:

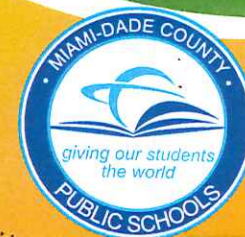
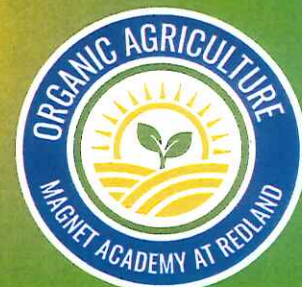
Applications may be obtained online. Once the completed application is received, eligibility is determined. When the number of eligible applications exceeds the number of spaces available in a magnet program, a computerized random selection process is used for student selection. Additional information on the magnet application process can be found at the School Choice & Parental Options website:

SCHOOL BOARD POLICY: 2370, Magnet Programs/Schools

Apply Online:

To apply, or for additional information, contact the academy Magnet Lead Teacher or visit redlandmiddleschool.org or call (305) 247-6112

REDLAND MIDDLE SCHOOL
16001 SW 248 STREET
Homestead, FL 33031
(305) 247-6112



WHY ROBOTICS

Robotics helps students link together science, technology, engineering, and mathematics. Programming robots will allow students to realize their aptitude and curiosity in future job markets.

The Robotics Academy will offer students a remarkable academic background that will open up dozens of opportunities as well as satisfy creative and intellectual minds.

A WORLD OF ROBOTICS

In the 21st century, people are surrounded by automated machines and systems. Technological advances allow mankind to design, construct, and operate robots. Robots assist with dangerous, monotonous, and/or unpleasant tasks, controlled by computer programming. Some robots perform jobs or explore places that humans cannot. Robots may also assist people with disabilities, or work in hospitals helping with surgery, delivering food, or dispensing medications. There are even robots that help with popular household tasks, doing chores like vacuuming and mowing lawns. There are countless potential applications for robots and the path to discovering them is wide open!

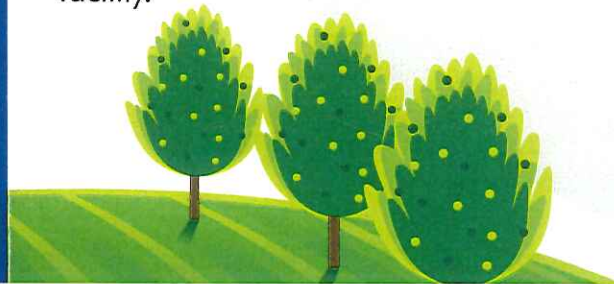
POTENTIAL CAREERS

- Computer Programmers
- Robotics Operators
- Robotics Engineers
- Mechanical Engineers
- Robotics Technicians
- Software Developers
- Robotics Account Managers
- Computer and Informational Research Scientists



THE FACILITIES

The facilities for the Agriscience program include a laboratory and classroom equipped with desktop computer stations, portable laptop computers, Promethean boards, and science-grade lab tables for conducting experiments. Adjacent to the laboratory is an ornamental plant nursery, aquaculture facility, vegetable growing beds, and a tropical fruit orchard. Students utilize these areas to produce plants, crops and fish that are consumed in the culinary program, sold to fund related field trips and competitions, exhibited at local fairs, or taken home by the students. The culinary facility includes a complete kitchen with 6 separate kitchen work areas where students are able to practice culinary skills learned in the course. Students utilize the facility to also prepare snacks and meals that are consumed at Redland Middle School as well as to prepare food that is served 'off site' or presented in competitions, such as the 'Taste of Education' event, where students prepare recipes for 500 people and have won thousands of dollars to be used to purchase equipment for their kitchen facility.



THE FCCLA AND FFA PROGRAM

Students enrolled in the Agriculture and Culinary Arts magnet will be members of FCCLA and FFA. These are local, state, and national organizations designed for students in these courses to continue to pursue their personal, career, and professional growth. Visit FCCLAinc.org and FFA.org for more information. Students are afforded opportunities to travel both within the state of Florida and to the national conventions for each organization. At these events, students apply what they have learned in the magnet program at Redland Middle School by competing in competitions, fairs, demonstrations, leadership workshops, and being able to participate in the democratic process as voting delegates. Each year, several students in the program win state championships and advance to nationals in various events.

REDLAND MIDDLE SCHOOL OFFERS:

- Regular/Advanced/Honors/Gifted classes
- Special education and ESOL classes tailored to meet IEP and LEP requirements
- Computer labs for Language Arts, Reading, Mathematics, and Science
- Promethean Board Technology
- Dual enrollment courses at Miami Dade College

HIGH SCHOOL CREDIT COURSES:

- Honors Physical Science, Honors Biology, Honors Algebra, and Honors Geometry.